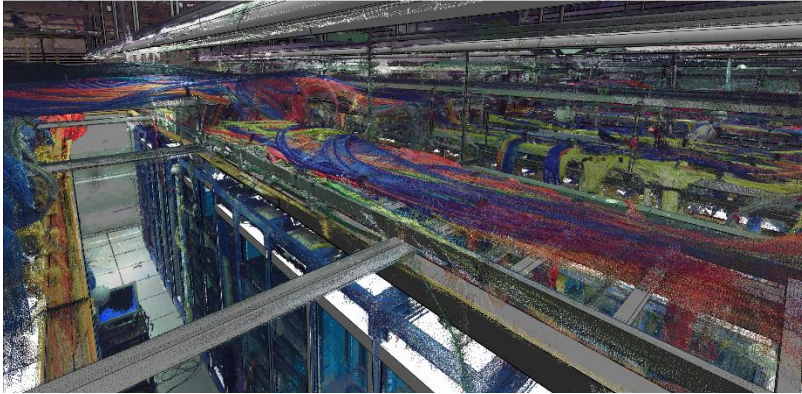


CASE STUDY: SAVING A DATA CENTER



Overloaded cable trays were in danger of structural collapse. Shutting down the data center was not an option. The daunting task included a combination of data capture technologies, workflows and intricate Revit modeling to capture extensive details. PLANiT succeeded in delivering a crucial parametric Revit model to the engineering team for the execution of an

intricate renovation strategy. The client acknowledged that PLANiT's deliverables should become mandatory for any future data center renovation.

MORE DETAILS ABOUT THIS PROJECT WILL BE POSTED SHORTLY.

IN THE MEANTIME, IF YOU WOULD LIKE MORE INFORMATION, PLEASE EMAIL info@planitmeasuring.com OR CALL 1.800.933.5136.

